

# Hot & Heavy Collection

## Mixte Solid and Mixte Stripe

Inspired by old-world Italian stone, Mixte offers an updated stone visual with a modern industrial twist. The collection's two styles include carefully shaded solid colors with a softened, time-worn feeling, and a coordinating tile that mixes random stripes.



Mixte Stripe | 743 Medley; Mixte Solid | 747 Mingle, 757 Admix, 879 Unite, 768 Integrate

### Features

- Old world stonework visuals with randomly striped accent tiles create stunning and unique installations
- Oversized 36" x 36" tiles install over large areas quickly
- 5mm overall thickness and 20 mil commercial wear layer for superior durability
- M-Force™ Enhanced Urethane finish for stain and wear resistance
- Inherent acoustic properties, IIC rating of 57 with drop ceiling, without underlayment
- Twice as thick as traditional ERT for seamless transition with Mohawk Group carpet tiles
- Installs over slabs up to 95% RH
- Non-skid backing keeps tiles in place
- 59% Recycled Content

Collection	Hot & Heavy
Style Names	Mixte Solid and Mixte Stripe
Style Number	
Mixte Solid	C0090
Mixte Stripe	C0091
Brand	Mohawk Group – Hard Surface
Product Type	Loose Lay Enhanced Resilient Tile



### DESIGN

Overall Gauge	.20" (5mm)
Wear Layer	20 mil (0.5mm)
Finish	M-Force™ Enhanced Urethane
Colors Available	
Mixte Solid	6
Mixte Stripe	2
Size	36"W x 36" L
Packaging	36 sq. ft. per carton / 25 cartons per pallet / 63.45 lbs per carton
Installation	Loose lay with perimeter glue
Required Adhesive	MS160 Spray Adhesive or M95.0 Resilient Flooring Adhesive



### PERFORMANCE

Construction	Commercial Grade Loose Lay Enhanced Resilient Tile
Classification	ASTM F1700 - Class III, Type A - Smooth, Type B - Embossed
Squareness	ASTM F2421 - Passes - ±0.10" max
Size and Tolerance	ASTM F2421 - Passes - ±0.16"/linear foot
Thickness	ASTM F386 - Passes - as specified ±0.005"
Flexibility	A ASTM F137 - Passes - 1" mandrel
Dimensional Stability	ASTM F2199 - Passes - 0.020"/linear foot max
Static Load Limit	ASTM F970 - Passes, modified at 1000 psi
Residual Indentation	ASTM F1914 - Passes - Average less than 8%, maximum single reading 10%
Slip Resistance	ASTM C1028 - Passes - Wet: ≥ 0.5
Resistance to Chemicals	ASTM F925 - Passes - No more than a slight change
Resistance to Light	ASTM F1515 - Passes - ΔE < 8
Resistance to Heat	ASTM F1514 - Passes - ΔE < 8
Critical Radiant Flux	ASTM E648 - Class 1 (>0.45 W/cm2)
Smoke Density	ASTM E662 Part A - Less than 450
IIC Rating	57 (over 6" concrete and drop ceiling)



### SUSTAINABILITY

Certification	FloorScore® Certified
Recycled Content	59% Recycled Content: 37% pre-consumer and 22% post-consumer content



### SERVICE

Warranty	Limited 10 Year Commercial Warranty
----------	-------------------------------------

# Hot & Heavy Collection

Mixte Solid and Mixte Stripe

## Colorways

Mixte Solid and Mixte Stripe offer oversized 36" x 36" stone visuals with a modern industrial twist.

### Mixte Solid



747 Mingle

757 Admix

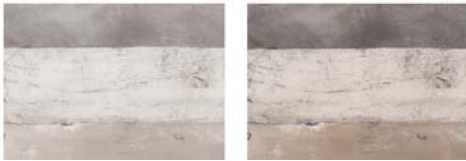
768 Integrate

879 Unite

888 Merge

989 Infuse

### Mixte Stripe



748 Medley

956 Compound



748 Medley

956 Compound

e

feature a 20 mil commercial wear layer, M-Force™ Enhanced Urethane for long-lasting, cost-effective maintenance. Mixte carries a 10 year commercial warranty.



- M-Force™ Enhanced Urethane Finish
- Heavy Commercial Wear Layer
- Decorative Print Layer
- Commercial Base
- Fiberglass Stabilizing Layer
- Stabilizing Backing Layer with Non-Skid Backing