

# deka lash

## IMPORTANT DOCUMENT NOTES:

1. THE INFORMATION CONTAINED HEREIN SHOULD BE INCORPORATED INTO THE ARCHITECTURAL DRAWINGS BUT THIS DOCUMENT IS NOT INTENDED AS A SUBSTITUTE FOR ARCHITECTURAL DRAWINGS. THE BRAND'S DESIGN STANDARDS ARE ONLY PROVIDED IN A PLAN FORMAT TO PROVIDE CLEAR, SITE-SPECIFIC GUIDANCE REGARDING 1) WHAT THE BRAND REQUIREMENTS ARE AND 2) HOW THEY SHOULD BE IMPLEMENTED FOR EACH SPECIFIC LOCATION.

2. EACH LOCATION IS UNIQUE AND DESIGN STANDARDS ARE SUBJECT TO CHANGE WITHOUT NOTICE. AS SUCH, THIS DOCUMENT SHOULD NOT BE USED AS A GUIDE OR TEMPLATE FOR ANY PROJECT OTHER THAN THE ONE FOR WHICH IT WAS PREPARED.

3. ANY DEVIATION FROM THE DESIGN DETAILED HEREIN INCLUDING, BUT NOT LIMITED TO, LAYOUT CHANGES OR MATERIAL OMISSIONS/SUBSTITUTIONS MUST BE 1) COMMUNICATED TO WADSWORTH DESIGN AND 2) APPROVED BY THE BRAND COMPLIANCE TEAM.

4. NOT ALL DIMENSIONS WILL BE ANNOTATED HEREIN. **A CAD VERSION OF THE FF&E PLAN, POWER & LOW VOLTAGE PLAN, AND REFLECTED CEILING PLAN WILL BE PROVIDED TO THE ARCHITECT** AS AN ACCURATE REFERENCE FOR ALL DIMENSIONS. ADDITIONAL INFORMATION OR FILES MAY BE PROVIDED UPON REQUEST.

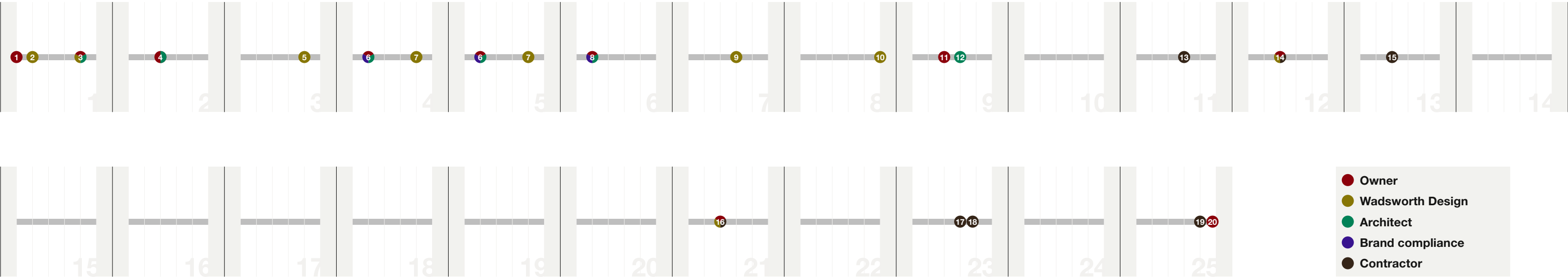
5. LINKS ARE FOUND THROUGHOUT THE PLAN SET. THESE LINKS CONTAIN ADDITIONAL INFORMATION THAT MAY BE NEEDED FOR PROPER PLANNING, SITE PREP, AND INSTALLATION. WATCH FOR THIS ICON. 

6. REVISIONS REQUESTED AFTER FINAL APPROVAL HAS BEEN PROVIDED MAY BE SUBJECT TO SUPPLEMENTAL DESIGN FEES.

7. A DIGITAL VERSION OF THE PLAN WILL BE DELIVERED AT THE TIME OF PHASE 2 SHIPMENT. THIS VERSION WILL CONTAIN ONLY THE PLAN SHEETS RELEVANT TO PHASE 2 INSTALLATION AND TAKES PRECEDENCE OVER THE INFORMATION PROVIDED IN ANY PREVIOUS VERSION OF THE PLAN.

8. WE'RE HERE TO HELP. PLEASE REACH OUT.

- FOR DESIGN QUESTIONS, CONTACT YOUR ASSIGNED DESIGNER
- FOR ORDERING OR FULFILLMENT QUESTIONS, CONTACT [BRUCE@WADSWORTHDESIGN.COM](mailto:BRUCE@WADSWORTHDESIGN.COM)
- FOR SHIPPING OR RMA QUESTIONS, CONTACT [BRETT@WADSWORTHDESIGN.COM](mailto:BRETT@WADSWORTHDESIGN.COM)
- FOR ANY OTHER QUESTIONS RELATED TO WADSWORTH DESIGN'S SCOPE, PLEASE CALL 801-235-7065



**1 Design order placed**  
To initiate the design process, please send the signed estimate and payment as directed by the design quote.

**2 Designer introduced** *(Please allow 1 business day after the design order is processed.)*  
Your assigned designer will reach out to schedule a kick-off call.

**3 Kick off call completed** *(We allot 2-3 business days following introduction to coordinate schedules\*.)*  
Typical call duration is 30-60 minutes. The architect assigned to the project must join the client and designer for this call. The kick off call is an opportunity to:  
1) Review as-built conditions  
2) Discuss project goals  
3) Review timelines and deliverables  
4) Request additional input as needed

**4 Intake information delivered** *(We allot 2-3 business days following the kick-off call to collect information\*.)*  
At minimum, a verified as-built plan in CAD format is required before the design can begin. In situations where a site survey is needed, the architect is typically the person to coordinate that. Additional information such as photos may be requested by the designer.

**5 FF&E plan delivered** *(Please allow 5-7 business days following the kick off call for the first version of the FF&E plan.)*  
This plan will show proposed walls and proposed FF&E placement.

**6 FF&E plan feedback delivered** *(We allot 1-2 business days for response after the FF&E plan is delivered\*.)*  
1) From the client, feedback and/or approval is needed regarding space allocation, traffic flow, and overall look/feel.  
2) From the architect, feedback and/or approval is needed regarding code compliance and buildout feasibility.  
3) From the brand representative, feedback and/or approval is needed regarding brand compliance.

**7 Revised FF&E plan delivered** *(Please allow 2-3 business days for plan revisions after feedback is received.)*  
Your design quote will specify how many versions of the FF&E plan are allowed (typically 3). Additional revisions may necessitate a supplemental design fee.

**8 FF&E plan approved** *(We allot 1-2 business days for response after the FF&E plan is delivered\*.)*  
1) From the client, feedback and/or approval is needed regarding space allocation, traffic flow, and overall look/feel.  
2) From the architect, feedback and/or approval is needed regarding code compliance and buildout feasibility.  
3) From the brand representative, feedback and/or approval is needed regarding brand compliance.

**9 Full plan set delivered** *(Please allow 5-7 business days after final approval is received from all parties.)*  
Supplemental plan sheets will be added to the approved FF&E plan. This full document typically includes the following sheets:  
1) FF&E plan  
2) Reflected ceiling plan  
3) Power & low voltage plan  
4) Finish plan  
5) Interior elevations

Notes for the architect:  
1) The Wadsworth Design plan set is limited to the information relevant to the brand's design standards. It is expected that supplementation will be required when creating the architectural plans. For example, the power & low voltage plan will only specify the location of outlets required for the incoming branded FF&E package. Additional outlets may be needed and would need to be added to the architectural drawings.  
2) the FF&E, Reflected ceiling, and power & low voltage plans will be delivered in DWG format.

**10 FF&E quote(s) delivered** *(Please allow 7 business days after the final plan set is distributed.)*  
Typically, 2 FF&E quotes will be delivered:  
1) The "Phase 1" quote will list any Wadsworth-provided items that must be installed during construction.  
2) The "Phase 2" quote will list the Wadsworth-provided items that will be installed after construction is complete.

**11 FF&E order(s) placed** *(We allot 1-2 days for review and processing\*.)*  
To initiate production, please send the signed estimate and payment as directed on your quote. It is strongly recommended that these orders be placed early. Materials can be stored for up to one month past the ship date listed on the quote without storage fees but production cannot always be rushed.

**12 Architectural plans submitted** *(We allot 2 weeks for architectural drawings\*.)*  
Please note:  
1) The lead time for architectural drawings will vary. It is strongly recommended to confirm with the architect early in the process to avoid surprises.

**13 Permits issued & construction begins** *(We allot 2 weeks for plan review at the permit office\*.)*  
Please note:  
1) Plan review time will vary significantly per location. It is strongly recommended to confirm typical turnaround time with the permit office early in the process to avoid surprises.  
2) In some cases, a demolition permit may be secured prior to the construction permit - even before the design is complete. This provides a an opportunity to get a "head start" on construction.

**14 Phase 1 shipping confirmed** *(See notes below regarding timing)*  
Please note:  
1) Communication between client, contractor, and Wadsworth's shipping coordinator is crucial for timely delivery.  
2) The ship date listed on the FF&E order is the earliest that the order can be shipped. That date, or any alternate date, must be confirmed at least 2 weeks in advance before anything will be confirmed or scheduled.  
3) Rescheduling a shipment after confirmation may necessitate a fee.

**15 Phase 1 order received** *(Please allow up to 5 business days following ship date for transit. Transit time will vary.)*  
Please take note of the receiving instructions delivered by the Wadsworth Design's shipping coordinator. Failure to follow the receiving procedure outlined in that document may result in forfeited warranty.

**16 Phase 2 shipping confirmed** *(See notes below regarding timing)*  
Please note:  
1) Communication between client, contractor, and Wadsworth's shipping coordinator is crucial for timely delivery.  
2) The ship date listed on the FF&E order is the earliest that the order can be shipped. That date, or any alternate date, must be confirmed at least 2 weeks in advance before anything will be confirmed or scheduled.  
3) For Phase 2, the balance payment must be received at least 2 weeks prior to shipment.  
4) Prior to scheduling a phase 2 shipment, confirmation must be provided that construction will be complete prior to delivery. Storing phase 2 product in a construction zone typically leads to damaged FF&E.  
5) Rescheduling a shipment after confirmation may necessitate a fee.

**17 Construction completed** *(In our experience, construction typically takes 12 weeks\*.)*  
Please note:  
1) Construction time will vary significantly per location. It is strongly recommended to confirm with the contractor early in the process to avoid surprises.

**18 Phase 2 order received** *(Please allow up to 5 business days following ship date for transit. Transit time will vary.)*  
Please take note of the receiving instructions delivered by the shipping coordinator. Failure to follow the receiving procedure may result in forfeited warranty.

**19 Phase 2 installation complete** *(See notes below for typical installation time)*  
Wadsworth Design offers optional installation services but the contractor is encouraged to include this service in their bid. Wadsworth Design is typically able to complete installation in 3-7 business days. When completed by others, installation typically takes 7-10 business days.

**20 Move in!**

\*LEAD TIMES LISTED FOR ANY PROCESS OUTSIDE WADSWORTH DESIGN'S SCOPE ARE SOLELY ESTIMATIONS BASED ON PAST EXPERIENCE AND WILL VARY PER JOB. VERIFY WITH THE RESPONSIBLE PARTY.

# PLAN

ITEMS	NOTES		
LEASE NEGOTIATIONS	<div></div>		
VERIFIED AS-BUILT PLAN IN CAD FORMAT	<div></div>	AS-BUILT CONDITIONS ONLY - NOT AN FF&E LAYOUT. FIELD VERIFY AS NECESSARY.**	
DESIGN PLAN	<div></div>	INTENDED TO ESTABLISH BRAND-REQUIRED LAYOUT AND SPECS. NOT FOR PERMIT OR BUILD.	
STAMPED ARCHITECTURAL DRAWINGS	<div></div>	MUST ACCOMODATE THE BRAND REQUIREMENTS SPEC'D HEREIN****	
PERMIT	<div></div> <div></div> <div></div>	MUST ACCOMODATE THE BRAND REQUIREMENTS SPEC'D HEREIN	

# BUILD

ITEMS	NOTES		
DEMOLITION	<div></div>		
FRAMING	<div></div>		
WALL BLOCKING	<div></div> REQUIRED BLOCKING IS DETAILED ON THE INTERIOR ELEVATIONS HEREIN		
MEP WORK	<div></div>		
GYP BOARD, TEXTURE, PAINT, ETC.	<div></div> SEE THE FINISH PLAN FOR BRAND REQUIREMENTS		
CEILINGS	<div></div> SEE RCP AND/OR FINISH PLAN FOR SPECIFICATIONS		
STOREFRONT MODIFICATIONS (IF NEEDED)	<div></div> PROPOSED MODIFICATIONS, IF ANY, WOULD BE PROVIDED ON THE NEW CONSTRUCTION PLAN		
INTERIOR WINDOWS AND DOORS	<div></div> SEE FINISH PLAN FOR SPECIFICATIONS		
FIRE SUPPRESSION SYSTEMS	<div></div>		
EXTERIOR SIGNAGE	<div></div> <div></div> <div></div>	<div></div>	<div></div> CONSULT WITH BRAND COMPLIANCE TEAM FOR DIRECTION
POWER & LOW VOLTAGE**	<div></div> <div></div>	<div></div>	<div></div> SEE POWER & LOW VOLTAGE PLAN FOR RESPONSIBILITY BREAKDOWN AND SPECIFICATIONS**
LIGHTING**	<div></div> <div></div>	<div></div>	<div></div> SEE REFLECTED CEILING PLAN FOR RESPONSIBILITY BREAKDOWN AND SPECIFICATIONS**
INTERIOR FINISHES**	<div></div>	<div></div>	<div></div> SEE FINISH PLAN FOR RESPONSIBILITY BREAKDOWN AND SPECIFICATIONS**
FF&E**	<div></div> <div></div>	<div></div> <div></div>	<div></div> SEE FF&E PLAN FOR RESPONSIBILITY BREAKDOWN AND SPECIFICATIONS**
FF&E INSTALLATION***	<div></div>	<div></div>	

# NOTES

RESPONSIBILITY ASSIGNMENTS ARE DELINIATED IN GREATER DETAIL ON THE RELEVANT PLAN SHEET TO BE INCLUDED WITH THE FULL PLAN SET.
ITEMS LISTED AS "OPTIONAL" ARE AVAILABLE FOR PURCHASE FROM WADSWORTH DESIGN BUT WILL BE EXCLUDED FROM WADSWORTH DESIGN'S
PACKAGES UNLESS THE CLIENT EXPLICITLY REQUESTS OTHERWISE.
"BY OTHERS" INDICATES THAT THE RESPONSIBILITY DOES NOT FALL IN WADSWORTH DESIGN'S SCOPE. "BY OTHERS" DOES NOT IMPLY ANY SPECIFIC
PARTY. AS SUCH, IT IS RECOMMENDED THAT THE CLIENT AND CONTRACTOR DISCUSS THESE ITEMS TO CONFRIM WHO WILL BE RESPONSIBLE.
FOR ANY ITEM NOT LISTED ON THE PLAN AND/OR ANY ITEM FOR WHICH SPECIFICATIONS ARE NOT PROVIDED, THE SPECIFICATIONS AND
RESPONSIBILITY ASSIGNMENT ARE SUBJECT TO THE DISCRETION OF THE OWNER AND BRAND COMPLIANCE APPROVAL WHERE RELEVANT.
*THE DEFAULT RESPONSIBILITY ASSIGNMENTS LISTED HERE ARE INTENDED AS A GENERAL GUIDELINE ONLY. SCOPE AND RESPONSIBILITY
ASSIGNMENTS WILL VARY PER PROJECT.
**AS-BUILT CONDITIONS MUST INCLUDE: ANY EXISTING WALLS, COLUMNS, DOORS, WINDOWS, ELECTRICAL PANEL, PLUMBING, CEILING HEIGHT, AND
ANY OTHER EXISTING CONDITIONS THAT WILL IMPACT THE OVERALL LAYOUT.
***WADSWORTH DESIGN OFFERS OPTIONAL INSTALLATION SERVICES FOR CUSTOM MANUFACTURED PRODUCTS. THE CONTRACTOR IS ENCOURAGED
TO SUBMIT A COMPETING BID. BASIC INSTALLATION INSTRUCTIONS ARE PROVIDED. THE MOST CURRENT VERSION OF INSTRUCTIONS WILL BE
DISTRIBUTED AT THE TIME OF FF&E DELIVERY AT WHICH POINT ALL PREVIOUS VERSIONS ARE CONSIDERED INVALID.
****ARCHITECT IS RESONSIBLE FOR MEP & CONSTRUCTION DRAWINGS

Owner

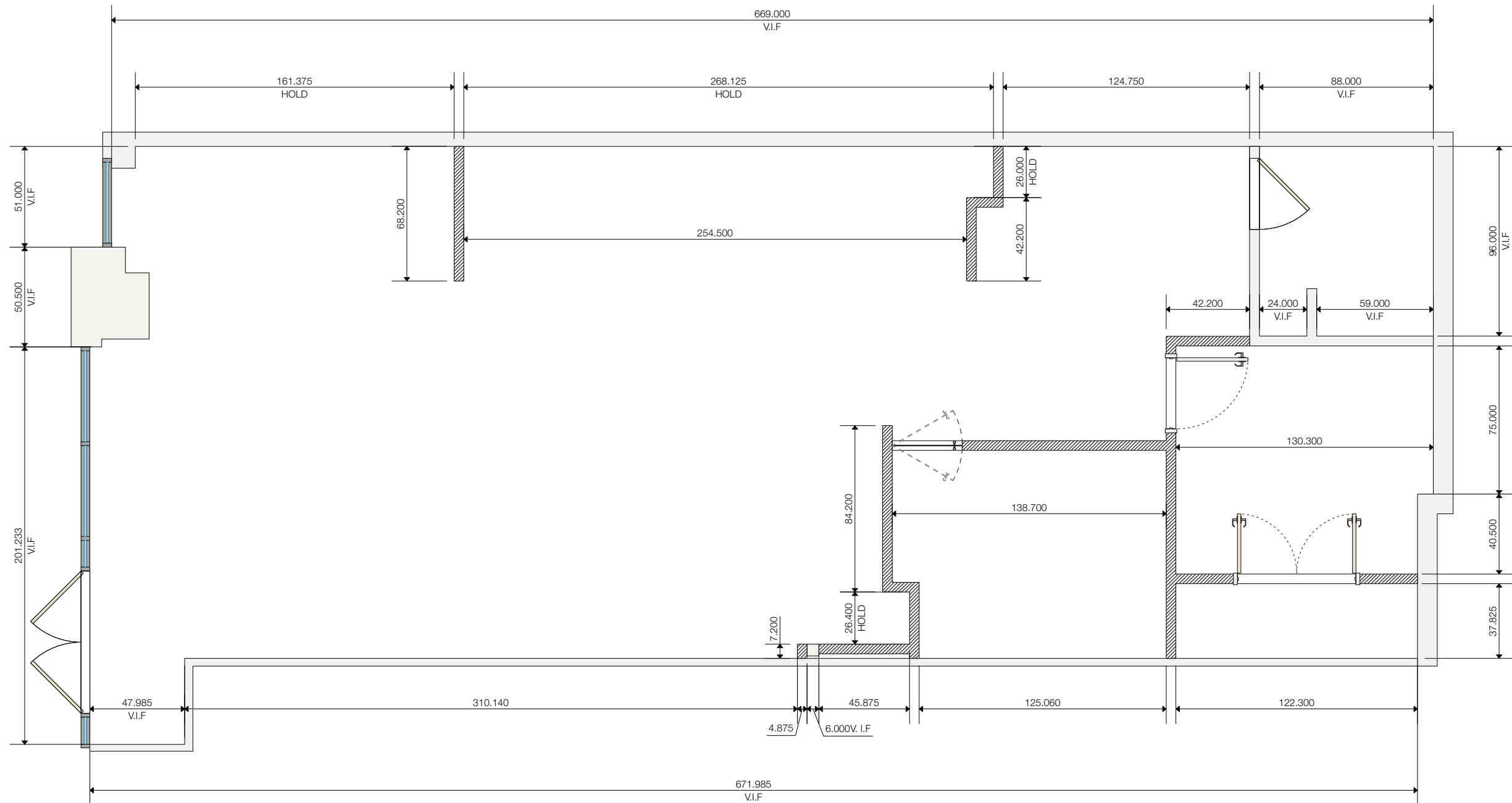
Wadsworth Design



Architect

Brand compliance

Contractor





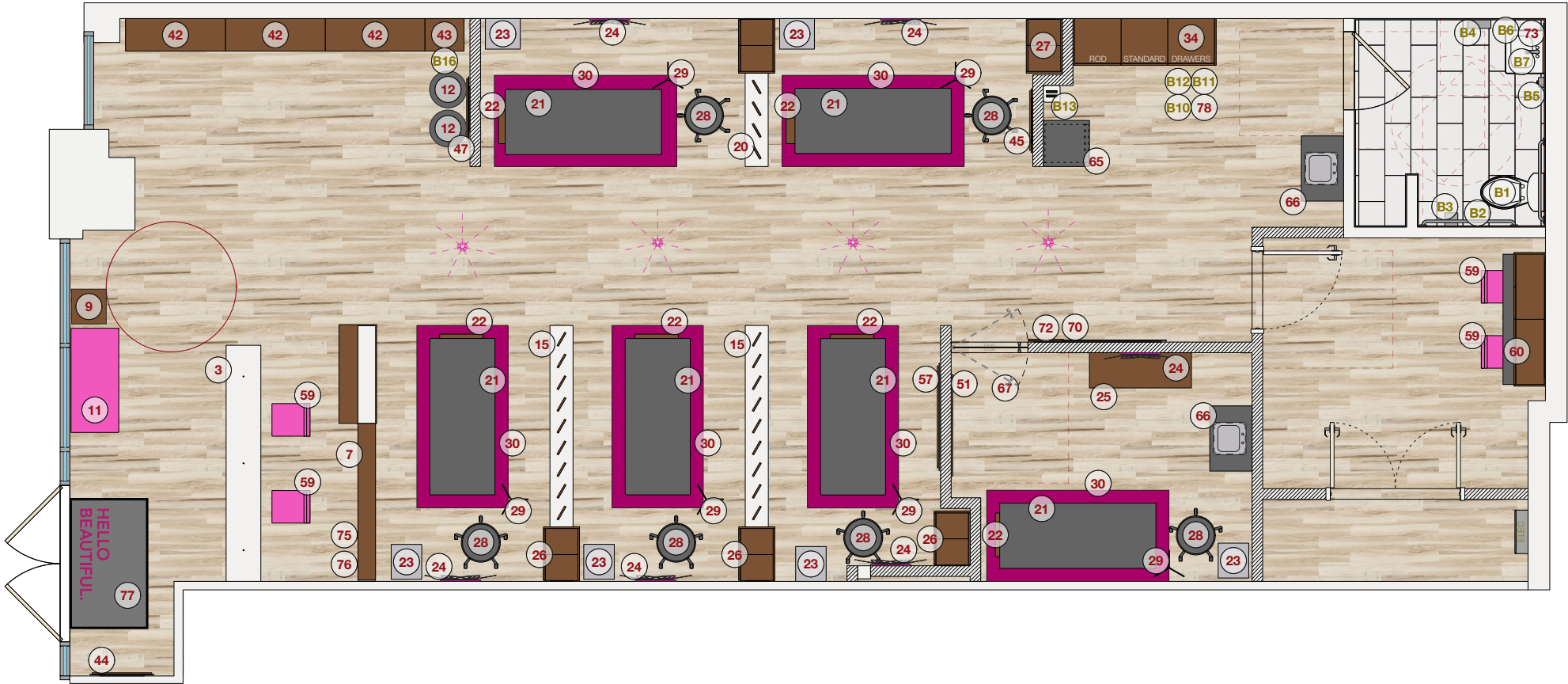
LEGEND	
	NEW WALL
	EXISTING WALL

**NEW WALLS - FINAL**  
**DEKA LASH - LITTLETON CO ( 8875.1 )**

AJ  
10/11/2022  
©2022

**Wadsworth**

CLICK LINK FOR  
MORE INFO



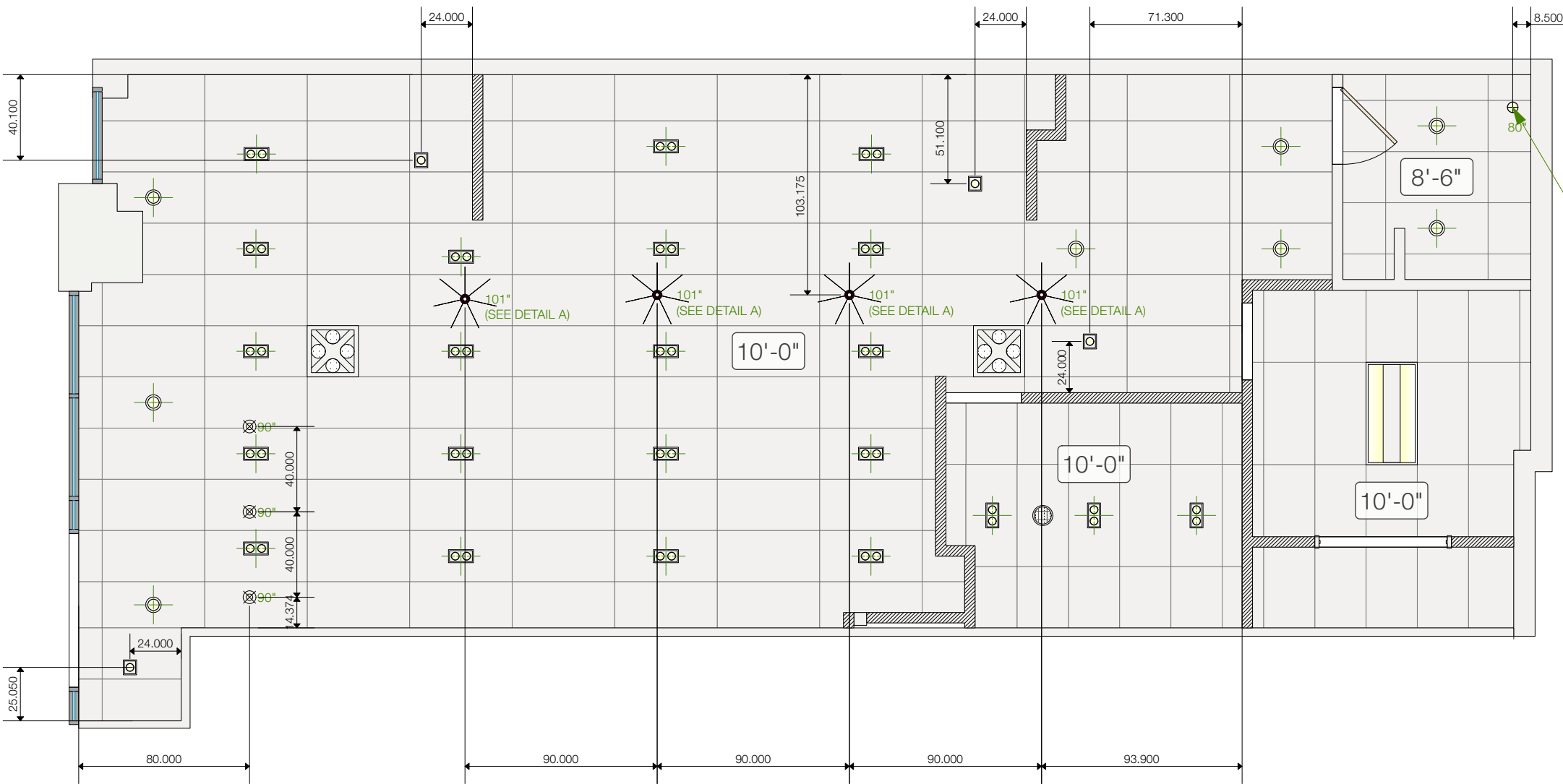
#	ITEMS BY WADSWORTH	INFO	#	ITEMS BY WADSWORTH	INFO
3	CHECK IN BAR (109")	<a href="#">INFO</a>	59	STOOL	COMING SOON
7	RECEPTION WALL WITH CABINETS - RIGHT (118")	<a href="#">INFO</a>	60	BREAKROOM CAB AND COUNTER	<a href="#">INFO</a>
9	END TABLE	COMING SOON	65	BEVERAGE COUNTER WITH FRIDGE	COMING SOON
11	BENCH	COMING SOON	66	HAND WASH COUNTER - 30"	<a href="#">INFO</a>
12	SEATING POD	COMING SOON	67	GLASS DOOR - RIGHT	<a href="#">INFO</a>
15	DIVIDER WALL - RIGHT (93")	<a href="#">INFO</a>	70	MICROBLADING ACCENT WALL - LEFT	<a href="#">INFO</a>
20	DIVIDER WALL - LEFT (43")	<a href="#">INFO</a>	72	SIGN - "PRIVATE LASH ROOM"	COMING SOON
21	STATION BED	COMING SOON	73	RESTROOM MIRROR	<a href="#">INFO</a>
22	BLANKET CUBBY	COMING SOON	75	FRAGRANCE	COMING SOON
23	STATION CART	<a href="#">INFO</a>	76	SCENT MACHINE	<a href="#">INFO</a>
24	MIRROR	COMING SOON	77	RUG "HELLO BEAUTIFUL"	COMING SOON
25	STATION CABINET	<a href="#">INFO</a>	78	SOUND SYSTEM	SEE POWER PLAN
26	DIVIDER CABINET 2 - RIGHT	<a href="#">INFO</a>	# ITEMS BY OTHERS		INFO
27	DIVIDER CABINET 2 - LEFT	<a href="#">INFO</a>	B1	TOILET	<a href="#">INFO</a>
28	STATION WORK STOOL	COMING SOON	B2	GRAB BARS	<a href="#">INFO</a>
29	STATION WORK LIGHT	COMING SOON	B3	TOILET TISSUE DISPENSER	<a href="#">INFO</a>
30	STATION RUG	COMING SOON	B4	PAPER TOWEL DISPENSER	<a href="#">INFO</a>
34	STORAGE CABINET - SET OF 3	<a href="#">INFO</a>	B5	SOAP DISPENSER	<a href="#">INFO</a>
42	RETAIL DISPLAY LIGHTED	COMING SOON	B6	LAVATORY	<a href="#">INFO</a>
43	RETAIL DISPLAY TV CABINET	COMING SOON	B7	LAVATORY FAUCET	<a href="#">INFO</a>
44	DEKA LASH FRAME A1	<a href="#">INFO</a>	B10	SECURITY SYSTEM	(PER BRAND)
45	DEKA LASH FRAME A2	<a href="#">INFO</a>	B11	MEDIA PLAYER	(PER BRAND)
47	DEKA LASH FRAME A4	<a href="#">INFO</a>	B12	ROUTER	(PER BRAND)
51	DEKA LASH FRAME B1	<a href="#">INFO</a>	B13	HUMIDIFIER/DEHUMIDIFIER	<a href="#">INFO</a>
57	DEKA LASH FRAME B7	<a href="#">INFO</a>	B16	RETAIL DIGITAL DISPLAY	<a href="#">INFO</a>

NOTES:

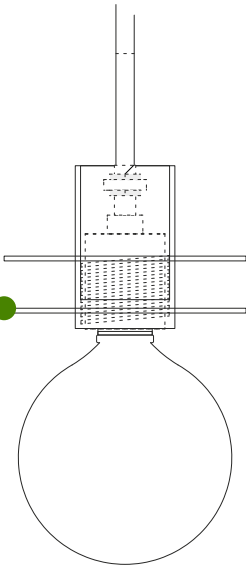
1. THIS PLAN IS USED FOR COMMUNICATING BRAND REQUIREMENTS TO THE ARCHITECT AND FOR WADSWORTH'S INTERNAL ESTIMATING PURPOSES ONLY. REFER TO ARCHITECTURAL PLAN SET FOR PERMITTING AND BUILD.
2. ANY MODIFICATIONS MADE IN THE CREATION OF THE ARCHITECTURAL PLANS MUST BE COMMUNICATED TO WADSWORTH DESIGN AND REVIEWED FOR BRAND COMPLIANCE.
3. CLIENT, ARCHITECT, AND COMPLIANCE TEAM MUST APPROVE THE FF&E PLAN BEFORE THE BALANCE OF THE DESIGN DOCUMENT WILL BE PRODUCED. REVISIONS REQUESTED AFTER APPROVAL MAY BE SUBJECT TO SUPPLEMENTAL DESIGN FEES.

FF&E PLAN - FINAL  
DEKA LASH - LITTLETON CO ( 8875.1 )





DETAIL A: CHANDELIER HANGING HEIGHT  
(SHOWN WITHOUT DECORATIVE FINS)



ITEMS BY WADSWORTH		INFO
	RECESSED 2-LAMP ADJUSTABLE	<a href="#">INFO</a>
	RECESSED 1-LAMP ADJUSTABLE	<a href="#">INFO</a>
	RECESSED DOWNLIGHT	<a href="#">INFO</a>
	CHANDELIER	<a href="#">INFO</a>
	RESTROOM PENDANT	<a href="#">INFO</a>
	RECEPTION PENDANT	<a href="#">INFO</a>
	2X4 TROFFER	<a href="#">INFO</a>
	SINGLE SPEAKER	<a href="#">SEE POWER PLAN</a>
	QUAD SPEAKER	<a href="#">SEE POWER PLAN</a>
CEILING MATERIALS		INFO
	2X4 ACT	<a href="#">SEE FINISH PLAN</a>
OTHER SYMBOLS		INFO
	FINISHED CEILING HEIGHT AFF	<a href="#">COMING SOON</a>
	HANGING HEIGHT (FOR SUSPENDED FIXTURES)	<a href="#">COMING SOON</a>
	INDICATES A FIXTURE IS CENTERED	<a href="#">COMING SOON</a>

NOTES:

1. THIS PLAN IS USED FOR COMMUNICATING BRAND REQUIREMENTS TO THE ARCHITECT AND FOR WADSWORTH'S INTERNAL ESTIMATING PURPOSES ONLY. REFER TO ARCHITECTURAL PLAN SET FOR PERMITTING AND BUILD.
2. ANY MODIFICATIONS MADE IN THE CREATION OF THE ARCHITECTURAL PLANS MUST BE COMMUNICATED TO WADSWORTH DESIGN AND REVIEWED FOR BRAND COMPLIANCE.
3. ALL WIRING AND INSTALLATION TO BE COMPLETED BY CONTRACTOR. THIS INCLUDES ANY SUPPLEMENTAL COMPONENTS NEEDED (IE JUNCTION BOXES, EXTENSION RODS, SUSPENSION CHAIN, UNISTRUT, ETC).
4. ANY SUPPLEMENTAL LIGHTING (I.E. EMERGENCY EXIT LIGHTING), CONTROLLERS (I.E. DIMMERS, OCCUPANCY SENSORS, ETC), OR OTHER COMPONENTS (SEE NOTE 5) NOT SHOWN ON THIS PLAN ARE ASSUMED TO BE SPEC'D BY THE ARCHITECT AND SUPPLIED AND INSTALLED BY THE CONTRACTOR.
5. IF ANY OF THE WADSWORTH-SUPPLIED FIXTURES NEED TO BE MODIFIED PER CODE (IE EMERGENCY BACKUP ADDED ETC), PLEASE CONTACT WADSWORTH DESIGN.
6. WHEN PLACING SUPPLEMENTAL OUTLETS, SWITCHES, ALARMS, ETC, REFER TO THE INTERIOR ELEVATIONS TO AVOID CONFLICT WITH MOUNTED FIXTURES. IF CONFLICT IS UNAVOIDABLE, CONTACT WADSWORTH DESIGN.
7. ELEVATION VALUES FOR WALL-MOUNTED COMPONENTS ARE GIVEN FROM CENTER OF THE COMPONENT TO THE FLOOR UNLESS NOTED OTHERWISE.
8. ELEVATION VALUES FOR CEILING-HUNG COMPONENTS ARE GIVEN FROM THE BOTTOM OF THE COMPONENT TO THE FLOOR UNLESS NOTED OTHERWISE.

**REFLECTED CEILING PLAN**  
**DEKA LASH - LITTLETON CO ( 8875.1 )**

AJ  
10/11/2022  
©2022

**Wadsworth**





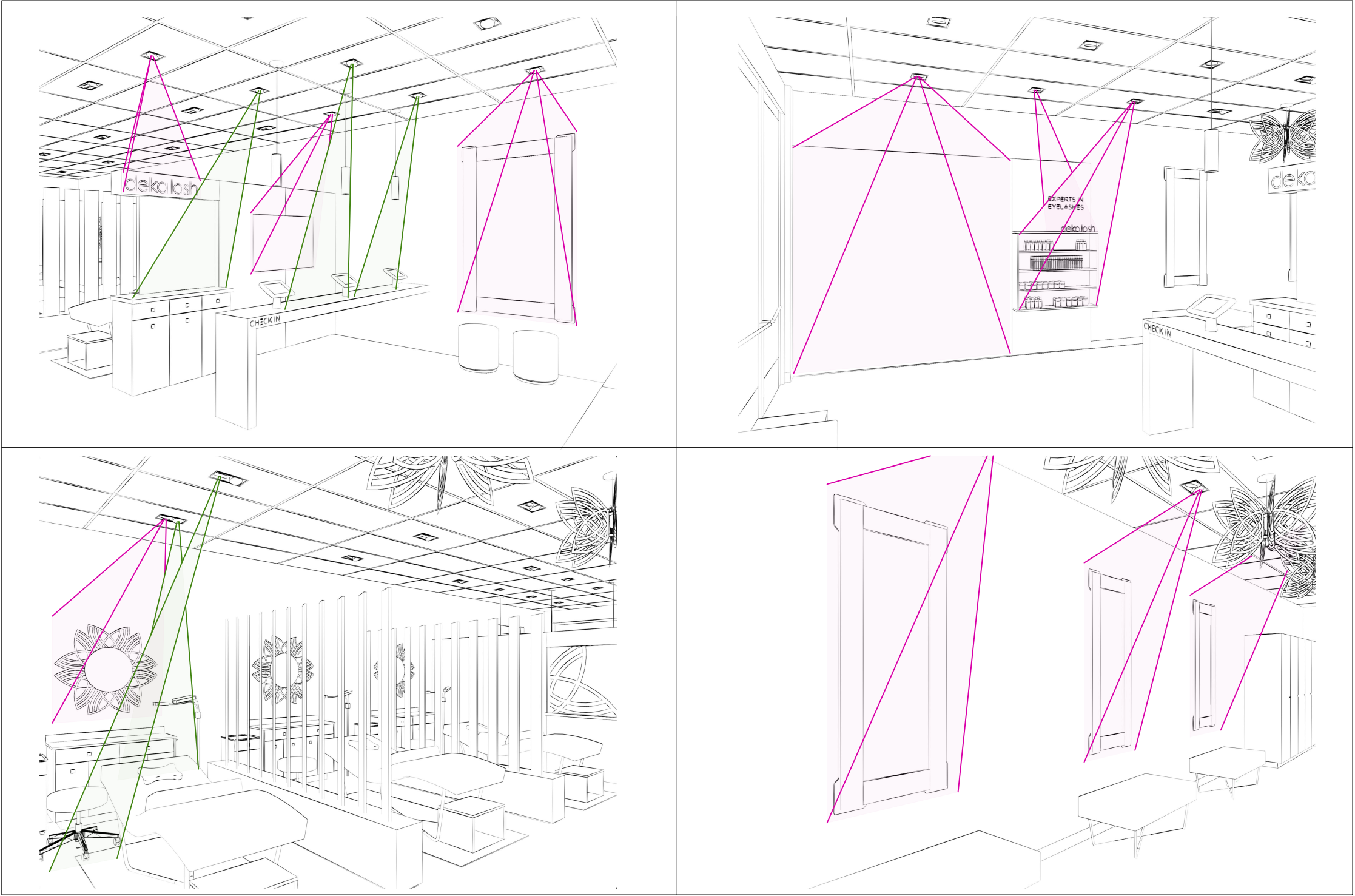
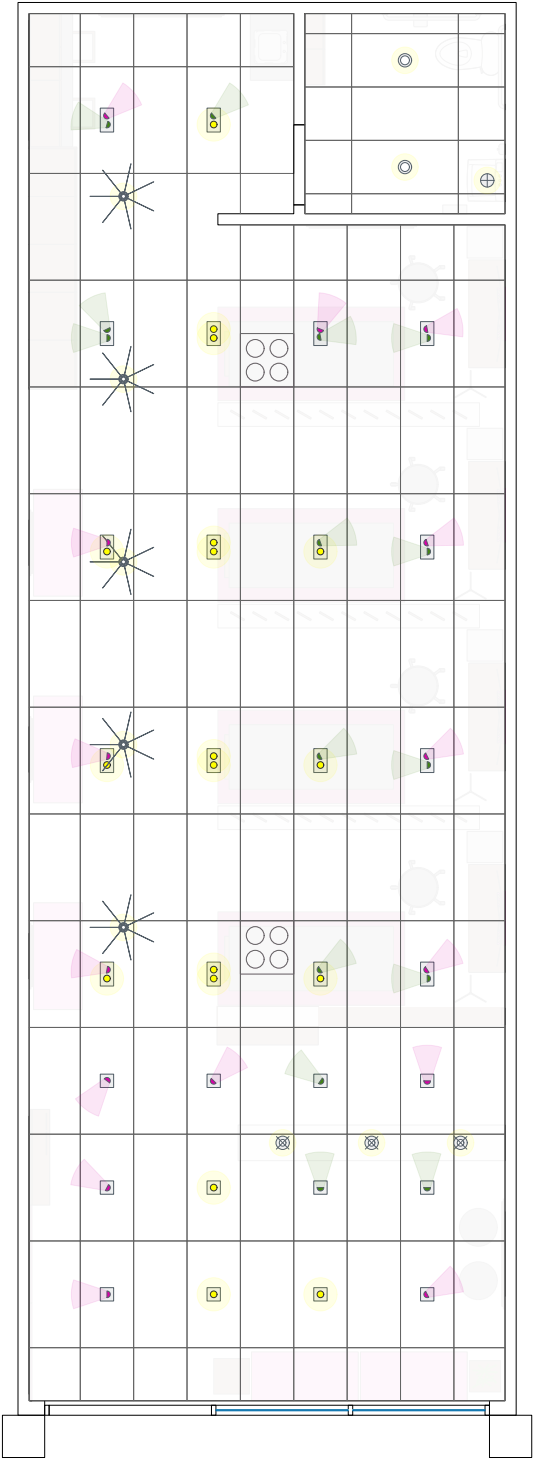
**GENERAL LIGHTING.** DIRECT THESE LIGHTS GENERALLY DOWN AND ADJUST TO FILL AREAS EVENLY.



**TASK LIGHTING.** DIRECT LIGHT SOURCES TO ALL WORK AREAS SUCH AS CHECK-IN BAR, STATIONS, AND BREAKROOM.



**ACCENT LIGHTING.** DIRECT LIGHT SOURCES TO ALL SIGNAGE, IMAGES, MIRRORS, AND MERCHANDISE.

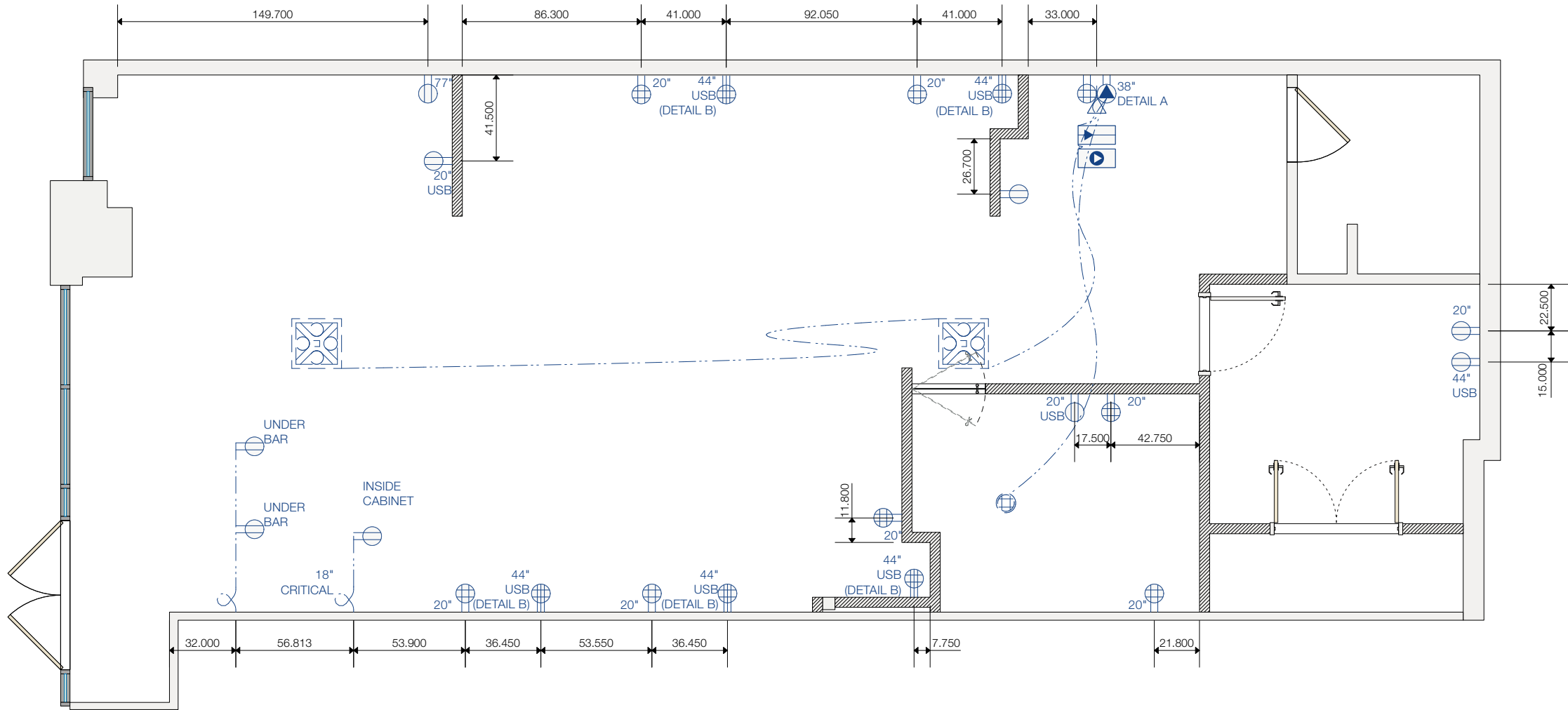


NOTES:

1. LIGHT ILLUMINATES, INSPIRES, DEFINES, AND WARMS. AFTER YOUR FF&E HAS BEEN INSTALLED, DON'T FORGET TO SET THE LIGHTING IN YOUR STORE TO ENHANCE YOUR INTERIORS. MAKE SURE ALL FIXTURES HAVE WORKING LAMPS AND ADJUST ACCORDINGLY. YOUR STORE ENVIRONMENT IS A LARGE PART OF YOUR BRAND. MAKE SURE ALL WHO ENTER, SEE IT IN ITS BEST LIGHT.

2. PRELIMINARY TRACK LIGHTING ADJUSTMENTS SHOULD BE MADE AT THE TIME OF INSTALL. FINAL ADJUSTMENTS SHOULD BE MADE AFTER FF&E HAS BEEN INSTALLED.

**REFLECTED CEILING PLAN (ADJUSTABLE LIGHTING GUIDE)**  
**DEKA LASH - LITTLETON CO ( 8875.1 )**



NOTES:

1. THIS PLAN IS USED FOR COMMUNICATING BRAND REQUIREMENTS TO THE ARCHITECT AND FOR WADSWORTH'S INTERNAL ESTIMATING PURPOSES ONLY. REFER TO ARCHITECTURAL PLAN SET FOR PERMITTING AND BUILD.
2. ANY MODIFICATIONS MADE IN THE CREATION OF THE ARCHITECTURAL PLANS MUST BE COMMUNICATED TO WADSWORTH DESIGN AND REVIEWED FOR BRAND COMPLIANCE.
3. ELECTRICAL REQUIREMENTS SPECIFIED HERE PERTAIN TO FURNITURE AND EQUIPMENT PROVIDED BY WADSWORTH DESIGN AND/OR ARE REQUIRED BY THE BRAND. SUPPLEMENTATION MAY BE NEEDED PER CODE.
4. ALL WIRING AND INSTALLATION OF ELECTRICAL COMPONENTS TO BE COMPLETED BY CONTRACTOR.
5. WHEN PLACING SUPPLEMENTAL OUTLETS, SWITCHES, ALARMS, ETC, REFER TO THE INTERIOR ELEVATIONS TO AVOID CONFLICT WITH MOUNTED FIXTURES. IF CONFLICT IS UNAVOIDABLE, CONTACT WADSWORTH DESIGN.
6. ELEVATION VALUES FOR WALL-MOUNTED COMPONENTS ARE GIVEN FROM CENTER OF THE COMPONENT TO THE FLOOR.
7. ELEVATION VALUES FOR CEILING-HUNG COMPONENTS ARE GIVEN FROM THE BOTTOM OF THE COMPONENT TO THE FLOOR.

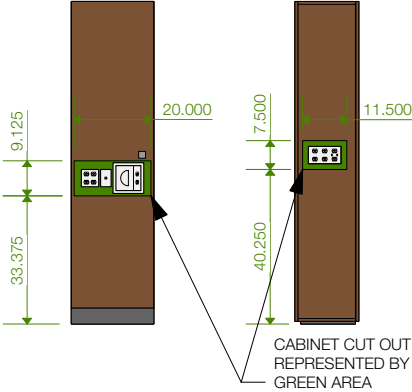
POWER & LOW VOLTAGE PLAN  
DEKA LASH - LITTLETON CO ( 8875.1 )

DETAIL A

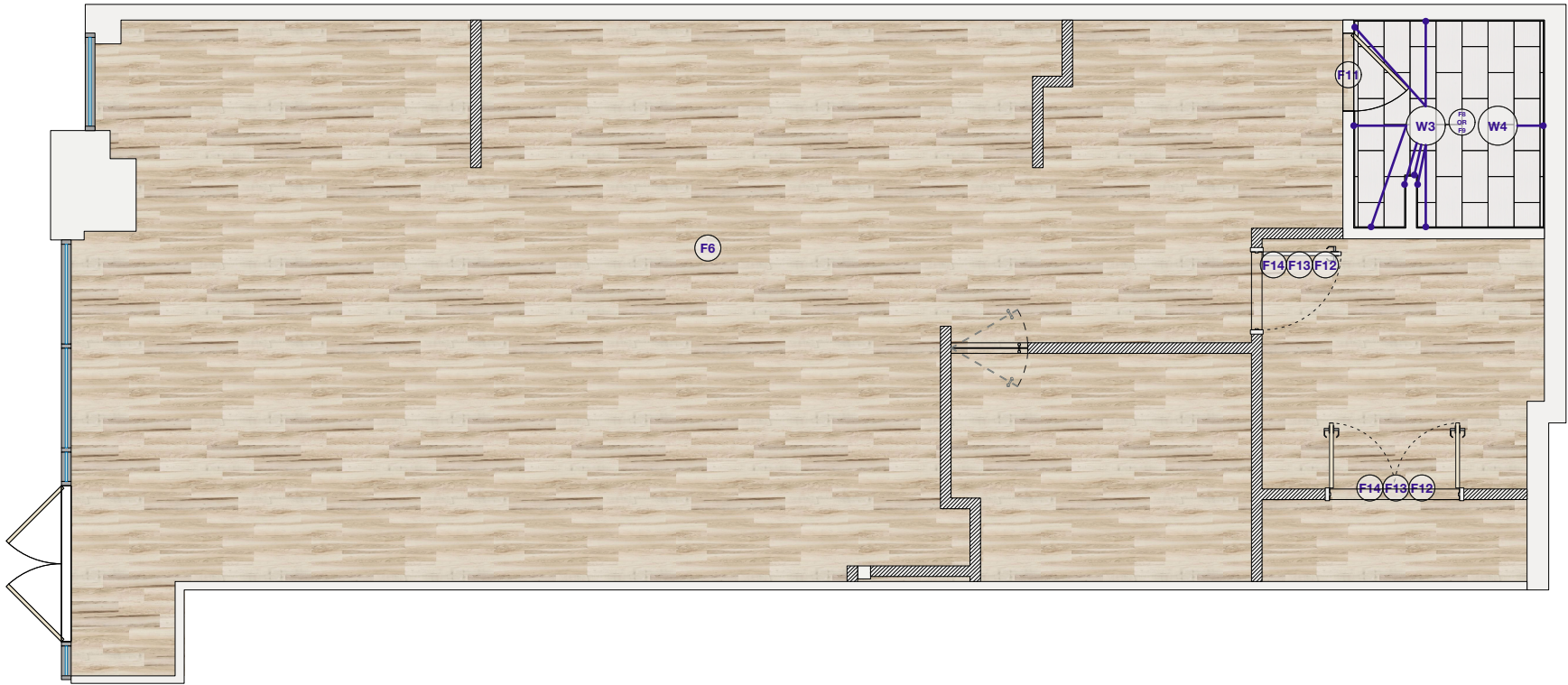
DETAIL B

ITEMS TYPICALLY  
HOUSED INSIDE  
THIS STORAGE  
CABINET:

1) AMP  
2) MEDIA PLAYER  
3) ROUTER



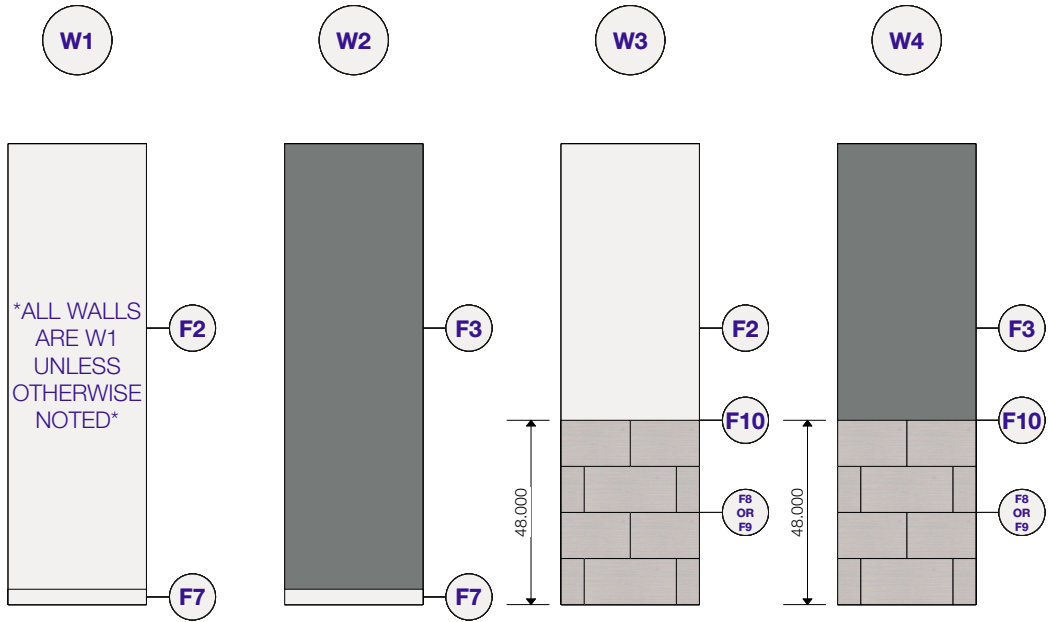
ITEMS BY WADSWORTH		INFO
	QUAD SPEAKER	
	SINGLE SPEAKER (RECESSED)	INFO
	SPEAKER WIRE	
	AMP	
ITEMS BY OTHERS		INFO
	MEDIA PLAYER	PER BRAND SPEC
	110V DUPLEX OUTLET	WHITE
	110V QUAD OUTLET	WHITE
	110V 3 GANG OUTLET	WHITE
	RECESSED MEDIA PLATE WITH DUPLEX OUTLET	INFO
	DATA	WHITE
	FLEX CONDUIT FROM WALL	
	INTEGRATED USB	WHITE
	HEIGHT FROM FLOOR TO CENTER OF COMPONENT	



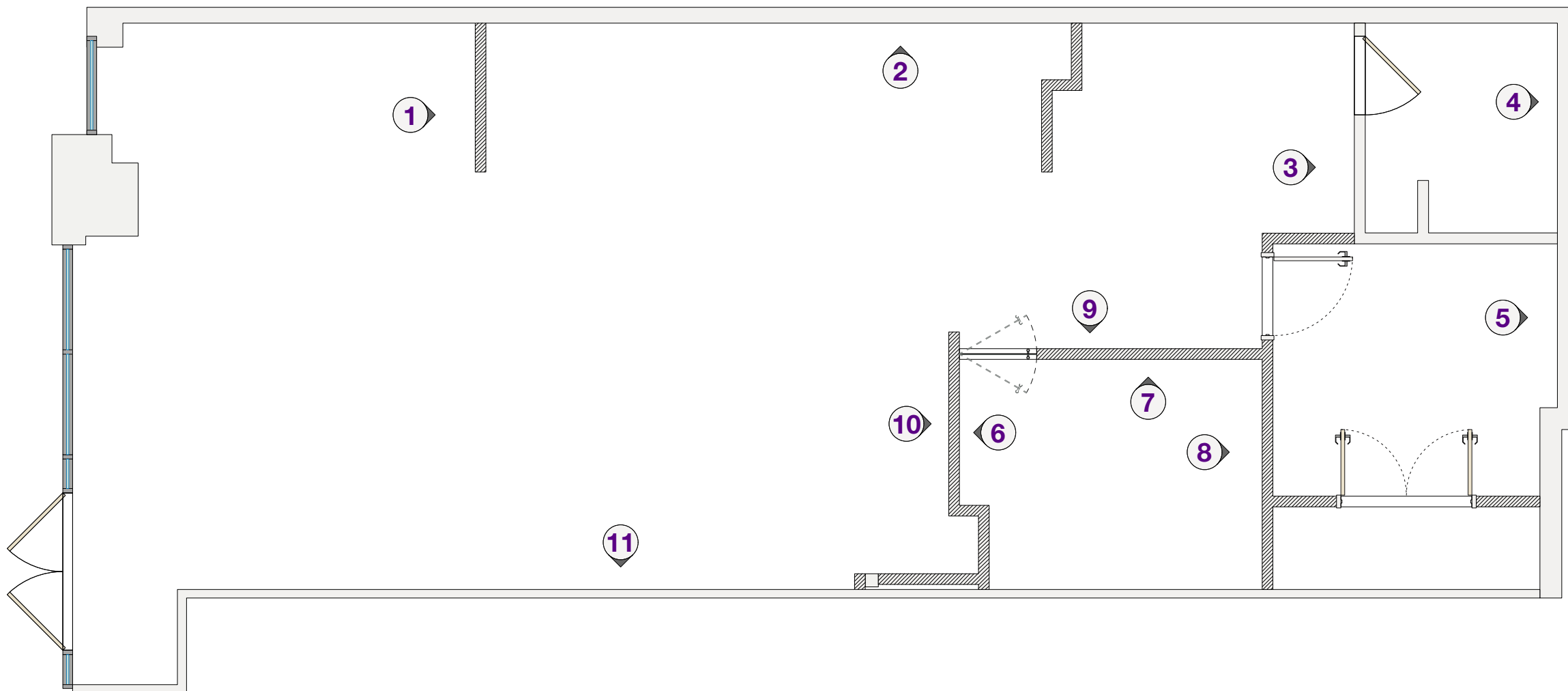
NOTES:

1. THIS PLAN IS USED FOR COMMUNICATING BRAND REQUIREMENTS TO THE ARCHITECT AND FOR WADSWORTH'S INTERNAL ESTIMATING PURPOSES ONLY. REFER TO ARCHITECTURAL PLAN SET FOR PERMITTING AND BUILD.
2. ANY MODIFICATIONS MADE IN THE CREATION OF THE ARCHITECTURAL PLANS MUST BE COMMUNICATED TO WADSWORTH DESIGN AND REVIEWED FOR BRAND COMPLIANCE.
3. GYP BOARD TO BE LEVEL 4 SMOOTH FINISH.
4. UNLESS SPECIFIED AS WADSWORTH-PROVIDED, ALL MATERIALS ARE ASSUMED TO BE PROVIDED AND INSTALLED BY THE CONTRACTOR.
5. UNAUTHORIZED SUBSTITUTIONS OR OMISSIONS OF ANY MATERIAL PECIFIED HERE IS NOT PERMITTED AND MAY NEED TO BE REPLACED AT CONTRACTOR'S EXPENSE.
6. ANY WALL RECEIVING WALL FILM MUST BE PAINTED WITH GLOSS SHEEN PAINT (ANY COLOR) 2 WEEKS PRIOR TO GRAPHICS INSTALLATION TO ALLOW FOR PROPER OFFGASSING. WALLS RECEIVING GRAPHICS MUST BE SMOOTH AND FREE OF ANY OBSTRUCTIONS.

**FINISH PLAN**  
**DEKA LASH - LITTLETON CO ( 8875.1 )**



	ITEMS BY WADSWORTH	SPEC	NOTES	INFO
F1	GLASS DOOR, HINGES AND PULL	FRAMELESS, 3/8" FROSTED TEMPERED GLASS DOOR WITH SELF-CENTERING HINGES	SEE INFO SHEET LINKED ON FF&E PLAN FOR CRUCIAL SITE PREP INSTRUCTIONS	
	ITEMS BY OTHERS	SPEC	NOTES	INFO
F2	WHITE PAINT	SHERWIN WILLIAMS - EXTRA WHITE SW7006 - SATIN/EG-SHEL	ALL WALLS UNLESS NOTED OTHERWISE	INFO
F3	ACCENT PAINT	SHERWIN WILLIAMS - EARL GREY SW7660 - EG-SHEL	USE ONLY WHERE NOTED	INFO
F4	GYP BOARD CEILING PAINT	SHERWIN WILLIAMS - EXTRA WHITE SW7006 - FLAT		INFO
F5	ACT CEILING	USG 4411 2'X4'X5/8" WHITE CEILING TILE WITH "A" PROFILE GRID		INFO
F6	LVP FLOORING	FRANCHISEE TO CHOOSE BETWEEN 2 OPTIONS. SEE INFO SHEET.	SEE INFO SHEET FOR DETAILS.	INFO
F7	WALL BASE	4.25" VINYL WALL BASE.	SEE INFO SHEET FOR DETAILS.	INFO
F8	TILE OPTION 1	MSI FOCUS GLACIER 12X24 PORCELAIN TILE NFOCGLA1224-N	USE MAPEI 01 ALABASTER GROUT WITH TILE OPTION 1	INFO
F9	TILE OPTION 2	MARAZZI STONEHOLLOW MIST 12X24 PORCELAIN TILE SH201224HD1P6	USE MAPEI 107 IRON GROUT WITH TILE OPTION 2	INFO
F10	TILE WAINSCOT EDGE TRIM	SCHLUTER L-ANGLE PROFILE ALUMINUM FINISH A100	USE TO TRIM THE TOP EDGE OF TILE WAINSCOT OR TILE WALL BASE	INFO
F11	TILE FLOOR EDGE TRIM	SCHLUTER RENO-U PROFILE ALUMINUM FINISH AEU100	USE TO TRANSITION FROM TILE TO LVT	INFO
F12	INTERIOR DOOR FRAMES	HOLLOW METAL DOOR FRAME	PAINT WITH SHERWIN WILLIAMS - EXTRA WHITE SW7006 - SEMI-GLOSS	INFO
F13	INTERIOR DOORS	1-PANEL DOOR. USE SOUNDPROOF COW QUIET DOOR™ SWEEP OR SIMILAR FOR SOUND.	PAINT WITH SHERWIN WILLIAMS - EXTRA WHITE SW7006 - SEMI-GLOSS	INFO
F14	INTERIOR DOOR HARDWARE	SCHLAGE S-SERIES LEVERS, SATURN DESIGN, SATIN CHROME FINISH	LOCK FUNCTION VARIES PER APPLICATION. COORDINATE WITH CLIENT.	INFO



NOTES:

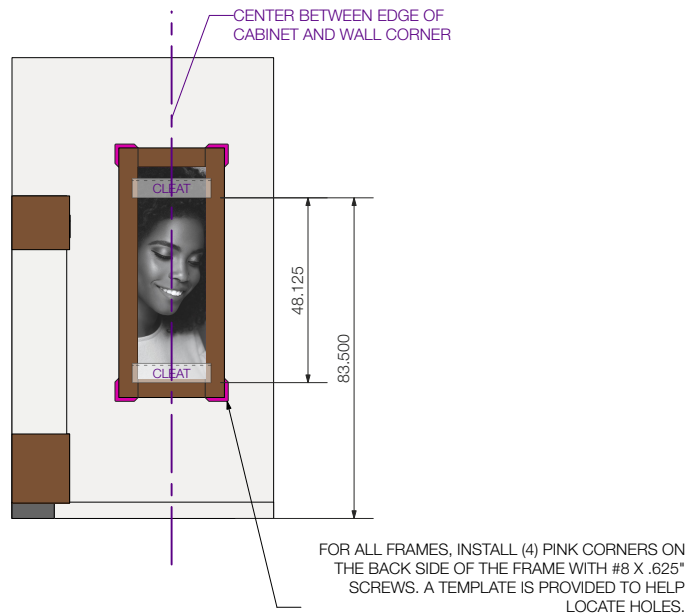
1. THIS PLAN IS USED FOR COMMUNICATING BRAND REQUIREMENTS TO THE ARCHITECT AND FOR WADSWORTH'S INTERNAL ESTIMATING PURPOSES ONLY. REFER TO ARCHITECTURAL PLAN SET FOR PERMITTING AND BUILD.
2. ANY MODIFICATIONS MADE IN THE CREATION OF THE ARCHITECTURAL PLANS MUST BE COMMUNICATED TO WADSWORTH DESIGN AND REVIEWED FOR BRAND COMPLIANCE.
3. ELEVATIONS SHOWN HERE ARE INTENDED TO DETAIL SITE PREP FOR AND PLACEMENT OF INCOMING FF&E. REFER TO INSTALLATION APPENDIX FOR DETAILED INSTALLATION INSTRUCTIONS.
2. ALL FIXTURES MUST BE INSTALLED IN ACCORDANCE WITH RELEVANT REGULATIONS.
3. ANY DIGITAL COPY OF THIS SHEET PROVIDED PRIOR TO THE FF&E SHIPMENT IS TO BE USED FOR INSTALLATION BIDDING PURPOSES ONLY AND IS SUBJECT TO CHANGE WITHOUT NOTICE. REFER TO THE PLANS AND INSTRUCTIONS PROVIDED AT THE TIME OF FF&E DELIVERY FOR THE MOST UP-TO-DATE INFORMATION.

**INTERIOR ELEVATIONS REFERENCE PLAN**  
**DEKA LASH - LITTLETON CO ( 8875.1 )**

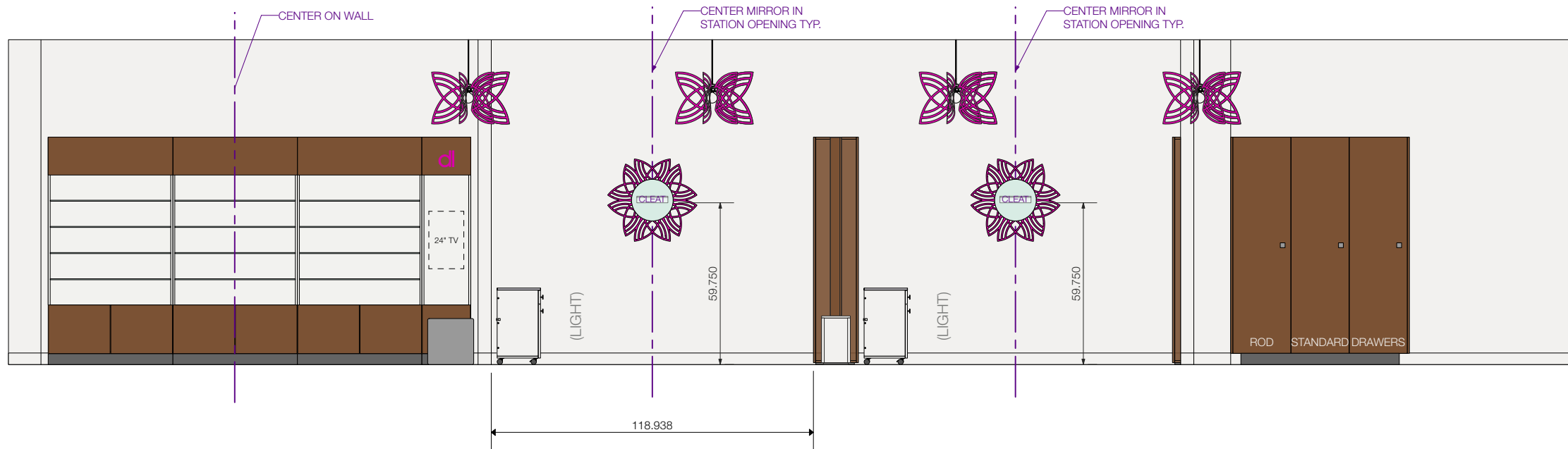
AJ  
10/11/2022  
©2022

**Wadsworth**

1



2



NOTES:

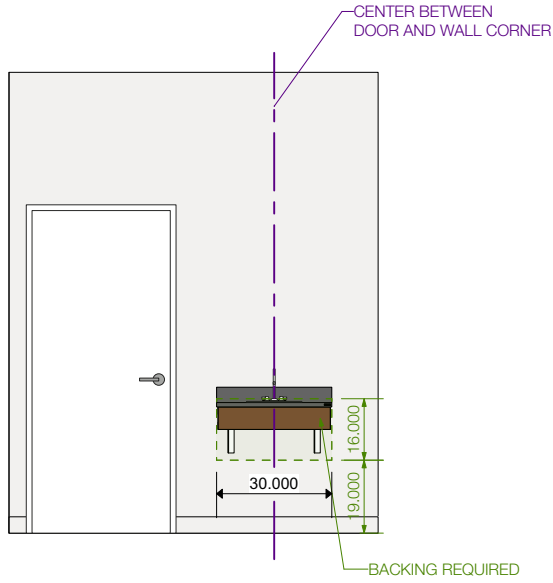
1. THIS PLAN IS USED FOR COMMUNICATING BRAND REQUIREMENTS TO THE ARCHITECT AND FOR WADSWORTH'S INTERNAL ESTIMATING PURPOSES ONLY. REFER TO ARCHITECTURAL PLAN SET FOR PERMITTING AND BUILD.
2. ANY MODIFICATIONS MADE IN THE CREATION OF THE ARCHITECTURAL PLANS MUST BE COMMUNICATED TO WADSWORTH DESIGN AND REVIEWED FOR BRAND COMPLIANCE.
3. ELEVATIONS SHOWN HERE ARE INTENDED TO DETAIL SITE PREP FOR AND PLACEMENT OF INCOMING FF&E. REFER TO INSTALLATION APPENDIX FOR DETAILED INSTALLATION INSTRUCTIONS.
2. ALL FIXTURES MUST BE INSTALLED IN ACCORDANCE WITH RELEVANT REGULATIONS.
3. ANY DIGITAL COPY OF THIS SHEET PROVIDED PRIOR TO THE FF&E SHIPMENT IS TO BE USED FOR INSTALLATION BIDDING PURPOSES ONLY AND IS SUBJECT TO CHANGE WITHOUT NOTICE. REFER TO THE PLANS AND INSTRUCTIONS PROVIDED AT THE TIME OF FF&E DELIVERY FOR THE MOST UP-TO-DATE INFORMATION.

**INTERIOR ELEVATIONS**  
**DEKA LASH - LITTLETON CO ( 8875.1 )**

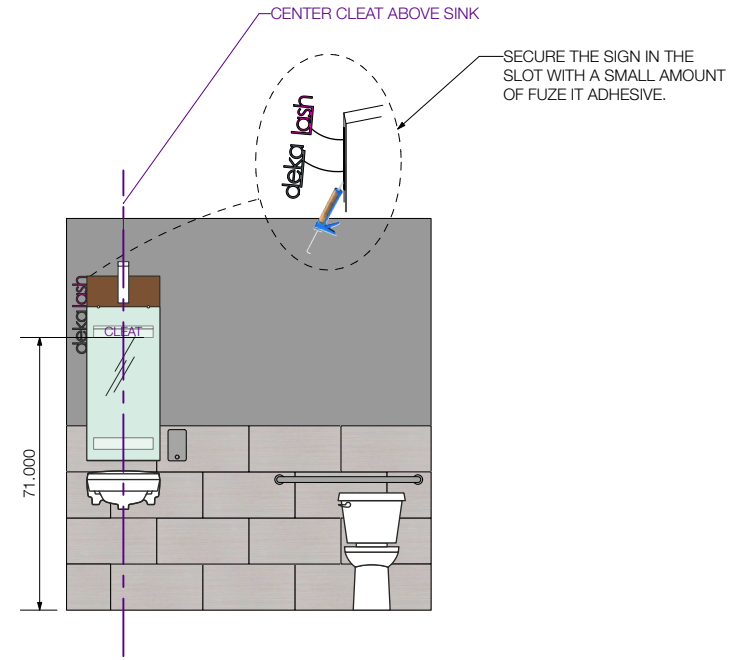
AJ  
 10/11/2022  
 ©2022

**Wadsworth**

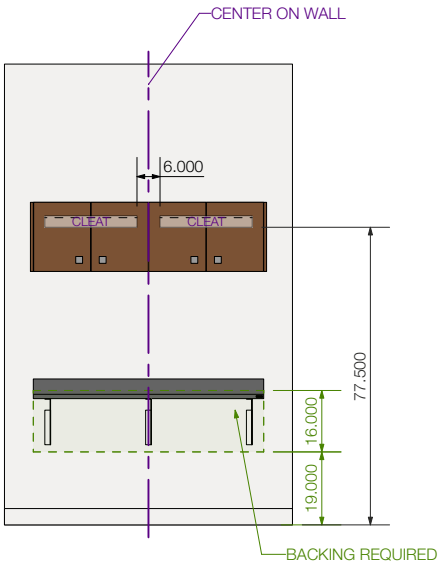
3



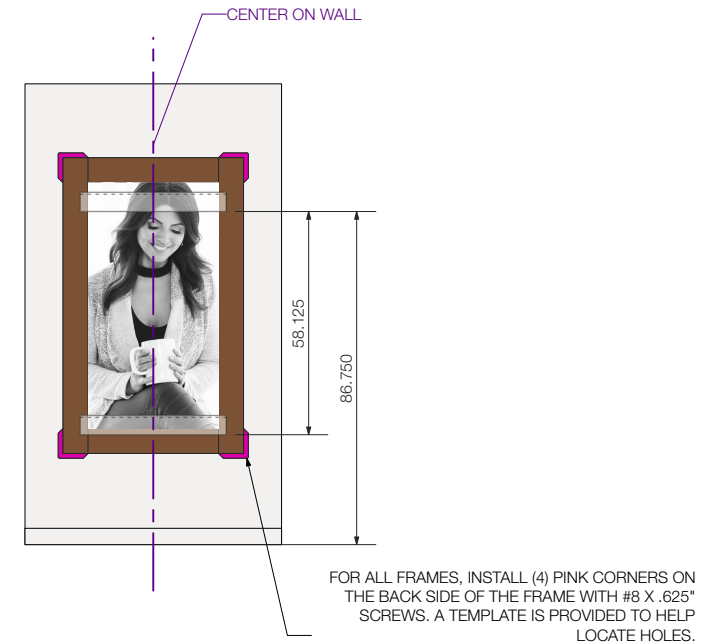
4



5



6



#### NOTES:

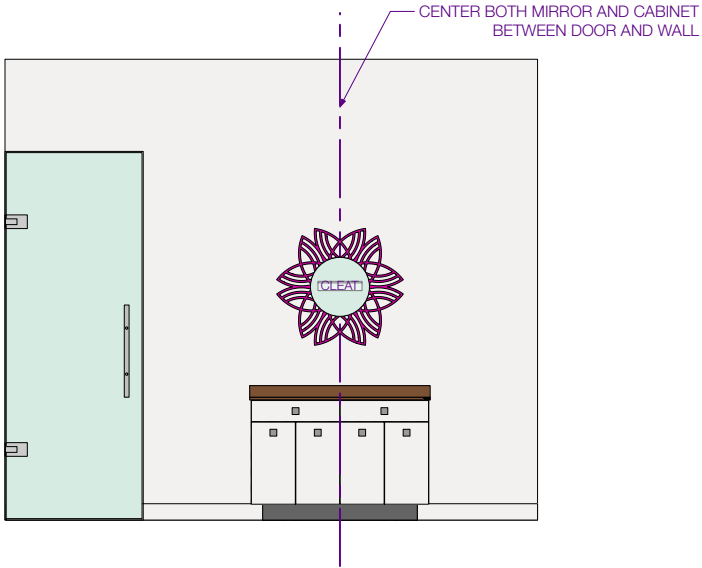
1. THIS PLAN IS USED FOR COMMUNICATING BRAND REQUIREMENTS TO THE ARCHITECT AND FOR WADSWORTH'S INTERNAL ESTIMATING PURPOSES ONLY. REFER TO ARCHITECTURAL PLAN SET FOR PERMITTING AND BUILD.
2. ANY MODIFICATIONS MADE IN THE CREATION OF THE ARCHITECTURAL PLANS MUST BE COMMUNICATED TO WADSWORTH DESIGN AND REVIEWED FOR BRAND COMPLIANCE.
3. ELEVATIONS SHOWN HERE ARE INTENDED TO DETAIL SITE PREP FOR AND PLACEMENT OF INCOMING FF&E. REFER TO INSTALLATION APPENDIX FOR DETAILED INSTALLATION INSTRUCTIONS.
2. ALL FIXTURES MUST BE INSTALLED IN ACCORDANCE WITH RELEVANT REGULATIONS.
3. ANY DIGITAL COPY OF THIS SHEET PROVIDED PRIOR TO THE FF&E SHIPMENT IS TO BE USED FOR INSTALLATION BIDDING PURPOSES ONLY AND IS SUBJECT TO CHANGE WITHOUT NOTICE. REFER TO THE PLANS AND INSTRUCTIONS PROVIDED AT THE TIME OF FF&E DELIVERY FOR THE MOST UP-TO-DATE INFORMATION.

**INTERIOR ELEVATIONS**  
**DEKA LASH - LITTLETON CO ( 8875.1 )**

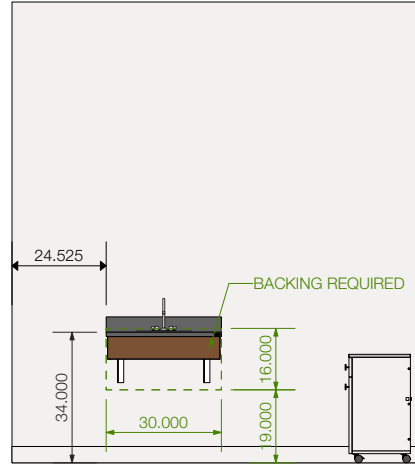
AJ  
10/11/2022  
©2022

**Wadsworth**

7



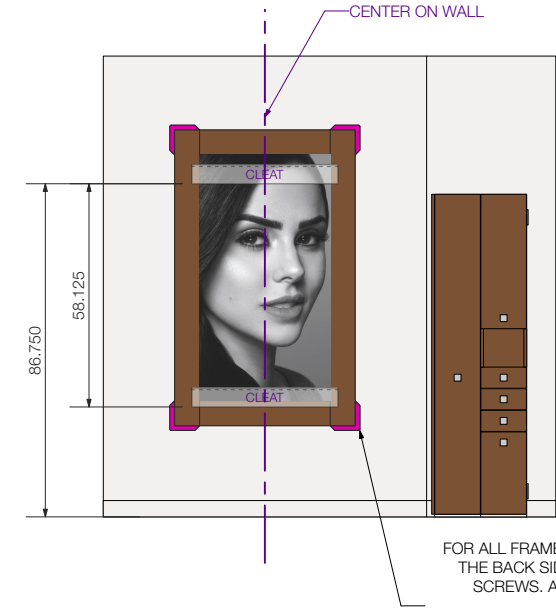
8



9



10



NOTES:

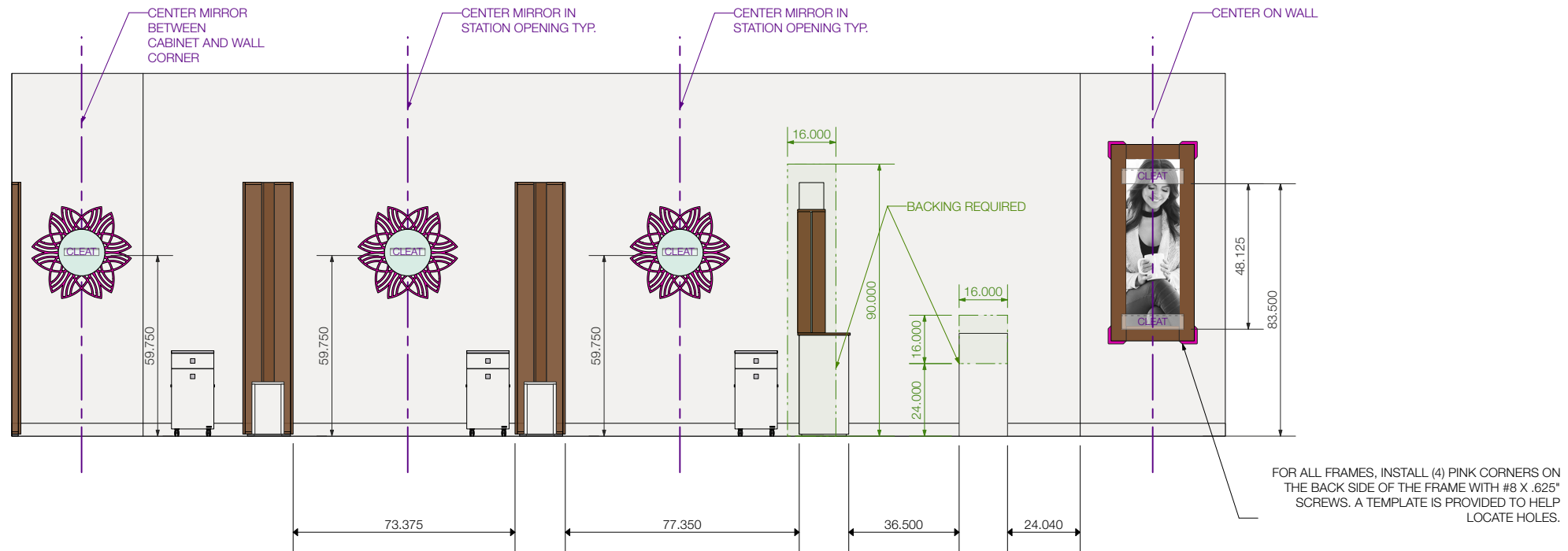
1. THIS PLAN IS USED FOR COMMUNICATING BRAND REQUIREMENTS TO THE ARCHITECT AND FOR WADSWORTH'S INTERNAL ESTIMATING PURPOSES ONLY. REFER TO ARCHITECTURAL PLAN SET FOR PERMITTING AND BUILD.
2. ANY MODIFICATIONS MADE IN THE CREATION OF THE ARCHITECTURAL PLANS MUST BE COMMUNICATED TO WADSWORTH DESIGN AND REVIEWED FOR BRAND COMPLIANCE.
3. ELEVATIONS SHOWN HERE ARE INTENDED TO DETAIL SITE PREP FOR AND PLACEMENT OF INCOMING FF&E. REFER TO INSTALLATION APPENDIX FOR DETAILED INSTALLATION INSTRUCTIONS.
2. ALL FIXTURES MUST BE INSTALLED IN ACCORDANCE WITH RELEVANT REGULATIONS.
3. ANY DIGITAL COPY OF THIS SHEET PROVIDED PRIOR TO THE FF&E SHIPMENT IS TO BE USED FOR INSTALLATION BIDDING PURPOSES ONLY AND IS SUBJECT TO CHANGE WITHOUT NOTICE. REFER TO THE PLANS AND INSTRUCTIONS PROVIDED AT THE TIME OF FF&E DELIVERY FOR THE MOST UP-TO-DATE INFORMATION.

**INTERIOR ELEVATIONS**  
**DEKA LASH - LITTLETON CO ( 8875.1 )**

AJ  
10/11/2022  
©2022

**Wadsworth**





NOTES:

1. THIS PLAN IS USED FOR COMMUNICATING BRAND REQUIREMENTS TO THE ARCHITECT AND FOR WADSWORTH'S INTERNAL ESTIMATING PURPOSES ONLY. REFER TO ARCHITECTURAL PLAN SET FOR PERMITTING AND BUILD.
2. ANY MODIFICATIONS MADE IN THE CREATION OF THE ARCHITECTURAL PLANS MUST BE COMMUNICATED TO WADSWORTH DESIGN AND REVIEWED FOR BRAND COMPLIANCE.
3. ELEVATIONS SHOWN HERE ARE INTENDED TO DETAIL SITE PREP FOR AND PLACEMENT OF INCOMING FF&E. REFER TO INSTALLATION APPENDIX FOR DETAILED INSTALLATION INSTRUCTIONS.
2. ALL FIXTURES MUST BE INSTALLED IN ACCORDANCE WITH RELEVANT REGULATIONS.
3. ANY DIGITAL COPY OF THIS SHEET PROVIDED PRIOR TO THE FF&E SHIPMENT IS TO BE USED FOR INSTALLATION BIDDING PURPOSES ONLY AND IS SUBJECT TO CHANGE WITHOUT NOTICE. REFER TO THE PLANS AND INSTRUCTIONS PROVIDED AT THE TIME OF FF&E DELIVERY FOR THE MOST UP-TO-DATE INFORMATION.